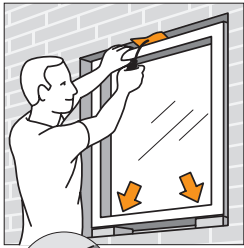
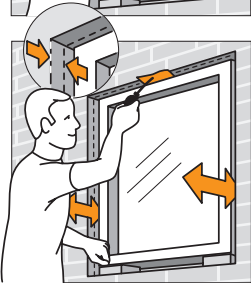


UK

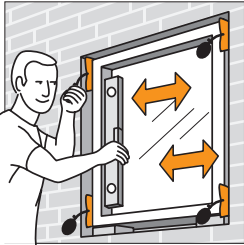
1 FIXATION

The window is lifted into place on top of two horizontal blocks. A WINBAG is placed between window and wall in the top and has to be pumped up to fix the window. The window is now just as tight as it can be adjusted.



2 ADJUSTMENT – in and out

Now the window is adjusted in and out first in the bottom and thereafter in the top – in proportion to the façade. This is done by pulling or pushing the window simultaneously with letting a bit of air out of the WINBAG at the top.



3 ADJUSTMENT – sideways

Now the WINBAG is placed in each side and in the end the WINBAG from the top is placed in the side as well. (Remember to place the WINBAGs in the far corners in the top and bottom). The adjustment can now easily be made by regulating the pressure in every WINBAG.



4 FASTENING

The window is fastened the normal way while the “pumped up” WINBAGs are holding the adjustment. In the end the WINBAGs are removed simply by letting out the air. The joint is now completely empty and ready for sealing.



Save time



From 2 to 50 mm



Carries up to 100 kg



Empty joints



Avoid scratches



No use of wedges

General notice

Winbag is a fully tested quality product made from durable materials. However the Winbag may be punctured by sharp objects such as screws and drills. Therefore should windows be secured at all times during fastening? It is important to keep in mind that the tool should only be considered an auxiliary tool during the fastening. The pressure in the pillow element will slowly decrease. The manufacturer cannot be held responsible for any damages caused by use of Winbags.

Technical Data

Load capacity:	100 kg/pcs.
Joint width:	2 - 50 mm
Material:	Fiber reinforced material
Content:	4 Winbag with belthook

Patent / D.B.G.M.